

VENDIM
Nr. 184, datë 19.3.2026

**PËR SHPALLJEN E DISA ZONAVE ME PËRPARËSI ZHVILLIMIN E
EKONOMISË MALORE NË BASHKINË VLORË**

Në mbështetje të nenit 100 të Kushtetutës dhe të pikës 1, të nenit 4, të ligjit nr. 20/2025, “Për paketën e maleve”, me propozimin e ministrit të Shtetit për Pushtetin Vendor, Këshilli i Ministrave

VENDOSI:

1. Shpalljen “Zonë me përparësi zhvillimin e ekonomisë malore” të disa zonave në territorin e Bashkisë Vlorë, si më poshtë vijon:

a) Zona nr. 1, fshatrat Trevëllazër dhe Cerkovinë, pjesë e Njesisë Administrative Novoselë, Bashkia Vlorë, qarku Vlorë, me sipërfaqe 744.99 (shtatëqind e dyzet e katër pikë nëntëdhjetë e nëntë) ha, sipas hartës në sistemin KRGJSH;

b) Zona nr. 2, fshatrat Risili, Çeprat, Shushicë, Bunavi, Grabian, Drithas, Mekat dhe Beshisht, pjesë e Njesisë Administrative Shushicë, Bashkia Vlorë, qarku Vlorë, me sipërfaqe 3 347.79 (tre mijë e treqind e dyzet e shtatë pikë shtatëdhjetë e nëntë) ha, sipas hartës në sistemin KRGJSH;

c) Zona nr. 3, fshatrat Kaninë, Sherishtë, Xhyherinë, Babicë e Madhe, Babicë e Vogël, Bestrovë, Kërkovë, Panaja dhe Hoshtimë, pjesë e Njesisë Administrative Qendër, Bashkia Vlorë, qarku Vlorë, me sipërfaqe 4 047.53 (katër mijë e dyzet e shtatë pikë pesëdhjetë e tre) ha, sipas hartës në sistemin KRGJSH;

ç) Zona nr. 4, fshatrat Radhimë, Tragjas, Dukat dhe Dukat Fshat, pjesë e Njesisë Administrative Orikum, Bashkia Vlorë, qarku Vlorë, me sipërfaqe 6 935.45 (gjashtë mijë e nëntëqind e tridhjetë e pesë pikë dyzet e pesë) ha, sipas hartës në sistemin KRGJSH.

2. Shtrirja, kufijtë dhe pikat e hyrjes e të daljes së këtyre zonave përcaktohen në hartën treguese sipas sistemit KRGJSH, që i bashkëlidhet këtij vendimi.

3. Llojet e aktiviteteve, që do të zhvillohen në këto zona, janë:

a) të zhvillimit ekonomik;

b) të zhvillimit industrial;

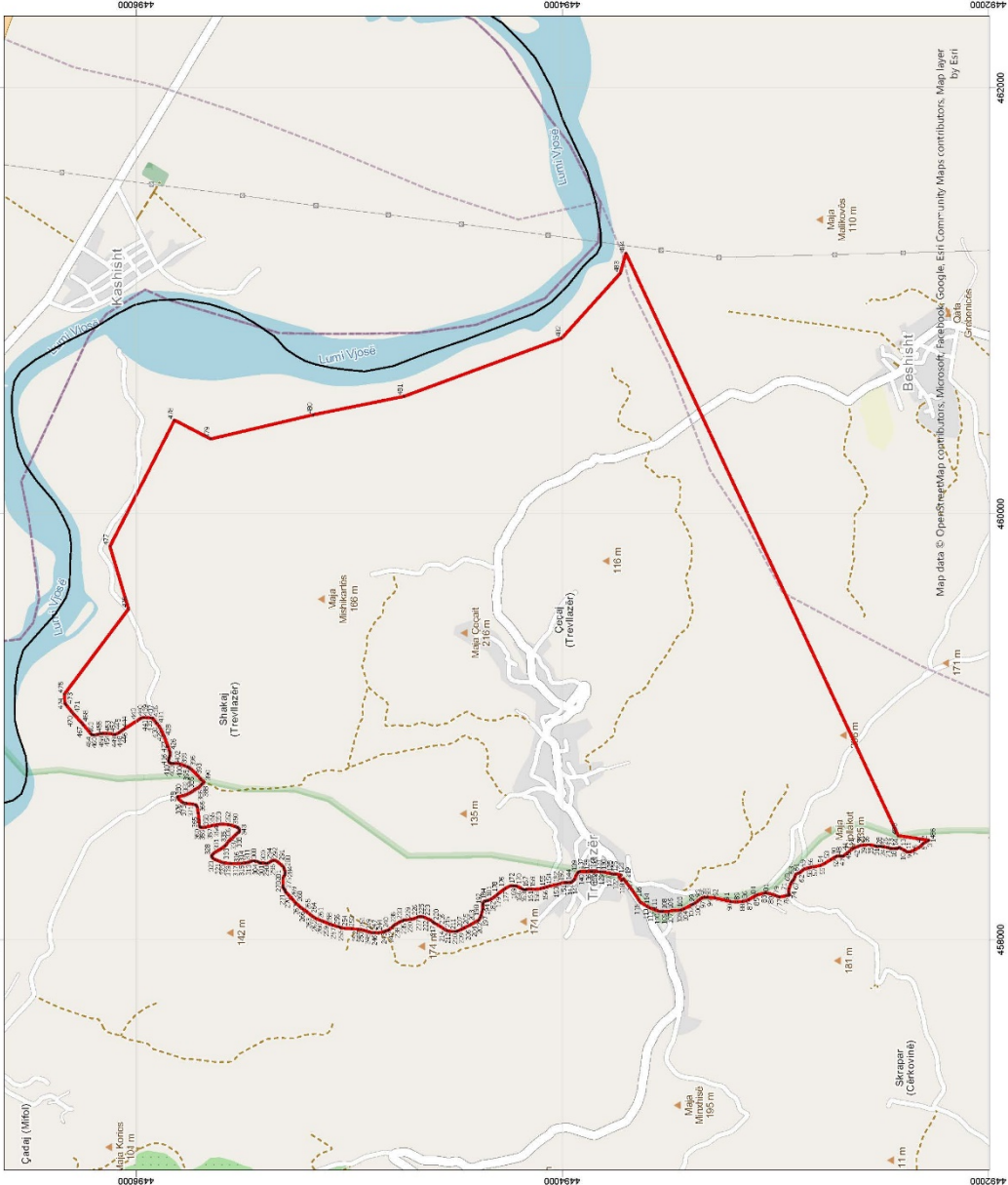
c) të zhvillimit turistik.

4. Ngarkohen Ministria e Ekonomisë dhe Inovacionit, Agjencia Shtetërore e Kadastrës dhe Bashkia Vlorë për zbatimin e këtij vendimi.

Ky vendim hyn në fuqi pas botimit në Fletoren Zyrtare.

KRYEMINISTËR
Edi Rama

ZONA ME PËRPARËSI ZHVILLIMIN E EKONOMISË MALORE
ZONA 1, NJESIA ADMINISTRATIVE NOVOSELË, BASHKIA VLORE, QARKU VLORE



Njësia Administrative	Zona	Sipërfaqja (ha)
Novoselë	Zona 1	744.99
Shushicë	Zona 2	3347.79
Gendër-Vlorë	Zona 3	4047.53
Oricum	Zona 4	6935.45



1:17,500



Legjendë

- Izo-pase
- Zona me përparësi zhvillim e ekonomisë malore
- Bashkia Vlorë
- Ndërtesa
- Kalëçaritë e Bregdetit Rrugëzor
- C. Rruges Interurbane Dytësore
- F. Rruges Lokale

*Zona 1 ndodhet në territorin e Njësias Administrative Novoselë, me sipërfaqe prej 744.99 ha
 **Sistemi Koordinativ: KRGLSH (Koniza Referues Gjeodezike Shqiptare)/ EPSG 6870

Map data © OpenStreetMap contributors, Google, Esri, Community Maps contributors, Map layer by Esri

Zona 1					
Njësia Administrative Novoselë					
Nr	Koordinata X	Koordinata Y	Nr	Koordinata X	Koordinata Y
1	458466.6405	4492279.312	244	458036.7821	4494837.613
2	458465.1021	4492282.543	245	458032.2548	4494860.281
3	458459.0711	4492291.787	246	458032.5524	4494879.896
4	458451.7296	4492304.614	247	458032.9083	4494885.826
5	458446.6004	4492309	248	458033.4277	4494895.991
6	458434.1681	4492322.828	249	458037.0926	4494908.731
7	458420.1177	4492348.7	250	458042.8063	4494927.42
8	458412.0656	4492365.275	251	458046.8583	4494943.34
9	458410.885	4492376.055	252	458049.0371	4494956.486
10	458412.7126	4492382.848	253	458051.568	4494987.84
11	458418.9434	4492393.29	254	458053.8378	4495020.935
12	458427.4586	4492407.567	255	458055.6227	4495038.482
13	458430.1399	4492413.734	256	458060.4885	4495046.804
14	458430.7341	4492417.339	257	458061.7246	4495054.424
15	458429.6206	4492422.194	258	458068.5136	4495077.831
16	458428.7212	4492426.84	259	458073.511	4495092.042
17	458428.4545	4492431.705	260	458085.2206	4495120.879
18	458427.9735	4492436.779	261	458090.8897	4495134.171
19	458427.7091	4492441.432	262	458100.1476	4495157.59
20	458427.4254	4492447.778	263	458108.2787	4495169.587
21	458428.1902	4492454.983	264	458118.3748	4495183.26
22	458429.5801	4492463.041	265	458130.7704	4495198.282
23	458432.0283	4492471.111	266	458144.1242	4495216.291
24	458433.868	4492476.846	267	458153.5666	4495229.295
25	458435.3599	4492490.198	268	458171.9674	4495249.767
26	458437.2702	4492496.701	269	458189.2545	4495265.042
27	458438.2712	4492501.739	270	458208.6246	4495283.252
28	458438.363	4492505.312	271	458220.6601	4495295.029
29	458438.327	4492508.486	272	458224.0598	4495298.507
30	458438.2834	4492512.321	273	458226.9606	4495299.334
31	458438.2534	4492514.967	274	458230.9223	4495299.908
32	458437.9498	4492518.402	275	458235.1366	4495301.543
33	458438.0475	4492521.446	276	458239.0653	4495305.027
34	458438.5301	4492525.552	277	458242.471	4495307.975
35	458440.6868	4492533.645	278	458245.3598	4495309.86
36	458445.1334	4492554.829	279	458248.525	4495310.69
37	458444.9952	4492566.997	280	458254.0979	4495309.166
38	458444.1381	4492586.564	281	458290.5125	4495309.342
39	458441.1902	4492601.544	282	458300.4266	4495302.946
40	458437.9123	4492610.634	283	458305.5324	4495300.623
41	458431.9128	4492626.439	284	458311.0945	4495300.052
42	458427.8518	4492634.594	285	458317.4429	4495300.124
43	458422.4669	4492642.866	286	458323.4559	4495301.779
44	458411.6188	4492655.809	287	458333.5811	4495304.751
45	458394.5521	4492677.044	288	458339.9061	4495306.887
46	458391.9622	4492681.459	289	458344.1624	4495309.475

47	458391.12	4492685.735	290	458354.0314	4495321.016
48	458391.5187	4492692.565	291	458365.1413	4495335.11
49	458391.7604	4492699.235	292	458373.1076	4495346.471
50	458391.4811	4492709.867	293	458372.7325	4495351.546
51	458389.6784	4492714.846	294	458371.075	4495357.718
52	458386.1075	4492721.79	295	458367.1686	4495366.245
53	458375.4271	4492739.764	296	458361.823	4495375.708
54	458357.9781	4492766.709	297	458358.5947	4495380.433
55	458348.0589	4492787.549	298	458357.9166	4495384.235
56	458341.7733	4492816.887	299	458358.3314	4495389.637
57	458340.987	4492830.212	300	458359.5232	4495397.675
58	458337.0386	4492842.442	301	458359.2239	4495410.053
59	458331.318	4492861.637	302	458359.1608	4495415.608
60	458324.8591	4492871.299	303	458360.2357	4495418.794
61	458315.6203	4492883.469	304	458361.3178	4495421.346
62	458311.287	4492892.309	305	458363.6571	4495425.024
63	458306.9748	4492903.602	306	458366.0052	4495427.908
64	458295.2927	4492908.023	307	458367.0532	4495433.475
65	458286.3276	4492911.228	308	458369.4916	4495442.392
66	458280.0153	4492913.802	309	458369.9172	4495446.841
67	458276.6413	4492919.716	310	458369.8541	4495452.396
68	458269.6525	4492923.605	311	458367.7025	4495460.15
69	458259.3461	4492928.448	312	458364.1208	4495469.203
70	458239.7589	4492935.17	313	458361.1547	4495478.799
71	458228.1562	4492937.684	314	458360.2192	4495486.619
72	458220.5513	4492937.598	315	458358.78	4495501.524
73	458216.9292	4492936.234	316	458358.2799	4495508.29
74	458209.6999	4492932.184	317	458357.1349	4495528.357
75	458208.2249	4492939.773	318	458356.881	4495550.709
76	458205.794	4492949.997	319	458357.5678	4495560.108
77	458200.1657	4492979.695	320	458360.5504	4495586.327
78	458201.7476	4492985.996	321	458363.4398	4495597.471
79	458206.9028	4492997.96	322	458371.0057	4495616.128
80	458213.3318	4493014.236	323	458376.2781	4495627.896
81	458218.0626	4493034.462	324	458381.2537	4495637.053
82	458220.4478	4493043.405	325	458385.6351	4495642.606
83	458218.0288	4493051.42	326	458389.4249	4495644.342
84	458210.1691	4493083.672	327	458391.9619	4495644.582
85	458205.0141	4493094.989	328	458394.2992	4495643.762
86	458187.3426	4493125.212	329	458397.9184	4495641.899
87	458181.466	4493139.51	330	458404.9786	4495635.206
88	458179.2334	4493154.405	331	458413.3686	4495623.238
89	458178.0058	4493180.19	332	458427.1861	4495599.268
90	458178.2393	4493199.481	333	458437.935	4495584.575
91	458179.078	4493208.266	334	458443.5068	4495578.5
92	458195.1263	4493281.144	335	458454.8209	4495569.951
93	458199.7433	4493316.424	336	458464.2185	4495562.439
94	458198.7208	4493323.439	337	458481.7876	4495542.638
95	458199.5719	4493333.454	338	458491.588	4495532.273

96	458195.6924	4493343.603	339	458500.739	4495523.171
97	458187.7281	4493355.364	340	458503.6554	4495517.966
98	458179.8697	4493364.783	341	458506.3806	4495515.616
99	458172.7549	4493373.962	342	458508.617	4495514.371
100	458168.4385	4493381.32	343	458510.2095	4495513.913
101	458165.7301	4493386.845	344	458513.2268	4495513.789
102	458163.2699	4493393.828	345	458517.6617	4495514.633
103	458145.079	4493428.057	346	458520.9748	4495516.416
104	458139.5511	4493440.911	347	458525.8462	4495520.757
105	458138.2211	4493448.563	348	458527.8806	4495523.32
106	458137.8939	4493472.361	349	458529.4064	4495528.735
107	458133.6767	4493499.664	350	458532.1714	4495536.861
108	458133.4459	4493519.988	351	458538.4657	4495555.663
109	458132.2906	4493529.736	352	458540.0818	4495567.11
110	458132.3591	4493537.674	353	458542.1291	4495593.344
111	458134.528	4493549.365	354	458541.4924	4495607.464
112	458141.0166	4493566.127	355	458539.0811	4495624.104
113	458149.3411	4493587.938	356	458535.1946	4495644.853
114	458157.3766	4493602.009	357	458528.7028	4495671.662
115	458174.6483	4493631.536	358	458526.1455	4495687.188
116	458188.93	4493641.222	359	458526.9171	4495695.529
117	458222.4109	4493663.605	360	458528.0789	4495698.056
118	458273.3498	4493702.658	361	458530.5678	4495700.2
119	458283.9923	4493710.025	362	458533.5963	4495701.425
120	458286.3814	4493711.67	363	458537.6887	4495702.133
121	458278.9902	4493720.847	364	458547.4715	4495702.641
122	458294.41	4493733.266	365	458563.5907	4495704.279
123	458302.733	4493722.932	366	458593.7624	4495708.012
124	458303.2075	4493723.259	367	458619.1188	4495711.607
125	458308.6593	4493745.555	368	458624.1237	4495713.515
126	458308.0949	4493753.326	369	458628.861	4495715.686
127	458307.8298	4493762.688	370	458632.6876	4495719.616
128	458310.5623	4493773.672	371	458634.2205	4495724.395
129	458315.9785	4493799.924	372	458636.4535	4495737.437
130	458318.3248	4493809.975	373	458639.2003	4495761.119
131	458318.047	4493820.448	374	458640.6666	4495771.771
132	458319.0229	4493832.364	375	458642.2034	4495776.233
133	458320.262	4493849.045	376	458645.7815	4495782.622
134	458320.4659	4493859.047	377	458658.2311	4495798.723
135	458320.686	4493867.621	378	458667.7561	4495804.453
136	458319.4376	4493884.945	379	458670.0631	4495805.141
137	458319.8933	4493914.713	380	458671.0888	4495802.176
138	458318.2372	4493920.779	381	458676.6797	4495775.784
139	458315.8083	4493924.984	382	458682.823	4495758.989
140	458311.4048	4493928.373	383	458691.2695	4495743.212
141	458300.8733	4493934.82	384	458698.0027	4495732.706
142	458283.8745	4493940.765	385	458706.066	4495721.554
143	458277.8892	4493945.988	386	458713.1748	4495707.084
144	458273.8108	4493951.021	387	458722.2151	4495697.266

145	458269.3092	4493956.049	388	458727.2349	4495692.032
146	458268.6023	4493962.391	389	458731.2327	4495689.432
147	458267.2437	4493970.206	390	458739.6612	4495680.556
148	458268.2248	4493976.99	391	458748.9134	4495690.503
149	458268.7996	4493982.287	392	458755.3448	4495697.243
150	458268.7419	4493987.366	393	458769.0066	4495710.255
151	458266.2723	4493999.825	394	458797.6844	4495738.657
152	458261.8911	4494012.897	395	458804.9977	4495746.958
153	458257.9283	4494026.397	396	458808.5575	4495751.839
154	458251.7272	4494058.073	397	458810.2695	4495754.708
155	458247.329	4494072.627	398	458812.6858	4495760.034
156	458243.1545	4494086.124	399	458818.0346	4495774.213
157	458239.3912	4494100.685	400	458825.7298	4495795.465
158	458236.5635	4494126.05	401	458827.5997	4495806.001
159	458236.9989	4494143.621	402	458828.1085	4495819.433
160	458237.6994	4494153.909	403	458827.8755	4495824.758
161	458236.1273	4494164.209	404	458827.9412	4495825.377
162	458234.6124	4494169.483	405	458826.9175	4495827.72
163	458234.0383	4494173.445	406	458826.8267	4495829.902
164	458234.0008	4494176.751	407	458826.8694	4495831.952
165	458235.1416	4494181.129	408	458827.4963	4495835.002
166	458237.0774	4494185.384	409	458828.2634	4495837.325
167	458239.673	4494189.779	410	458828.9675	4495839.384
168	458242.0086	4494193.774	411	458830.1332	4495841.58
169	458249.791	4494210.216	412	458831.6993	4495843.449
170	458251.4629	4494216.743	413	458833.4667	4495845.057
171	458252.3394	4494223.42	414	458836.2922	4495846.676
172	458252.7633	4494228.028	415	458838.6655	4495847.364
173	458253.3459	4494232.637	416	458840.7155	4495847.388
174	458253.5912	4494238.989	417	458844.2888	4495847.23
175	458250.1502	4494248.474	418	458848.9907	4495845.566
176	458240.9053	4494265.83	419	458851.3304	4495844.738
177	458235.1016	4494273.701	420	458856.0426	4495843.064
178	458216.489	4494298.565	421	458861.1501	4495841.914
179	458210.0588	4494305.688	422	458867.2818	4495840.533
180	458198.8026	4494319.618	423	458869.6243	4495840.282
181	458190.3946	4494333.174	424	458880.6953	4495841.064
182	458185.3447	4494344.545	425	458882.8004	4495841.517
183	458183.5431	4494349.445	426	458887.019	4495842.696
184	458182.7026	4494353.563	427	458906.0718	4495849.289
185	458182.5587	4494353.71	428	458952.9579	4495867.282
186	458181.5614	4494357.667	429	458992.9605	4495885.726
187	458180.5713	4494360.989	430	459004.4131	4495893.24
188	458178.9445	4494364.463	431	459015.5091	4495902.773
189	458177.3268	4494367.143	432	459018.6611	4495905.595
190	458174.9173	4494369.655	433	459020.7758	4495907.065
191	458170.2966	4494371.19	434	459022.2534	4495908.359
192	458164.5704	4494372.236	435	459038.3096	4495919.673
193	458157.1019	4494372.945	436	459039.471	4495922.226

194	458144.7297	4494372.169	437	459041.1733	4495930.909
195	458136.1394	4494373.818	438	459042.4085	4495947.762
196	458125.623	4494377.349	439	459043.2951	4495960.82
197	458114.7981	4494380.084	440	459042.7239	4495965.428
198	458109.2271	4494381.449	441	459040.4742	4495974.627
199	458103.6487	4494383.449	442	459036.8229	4495981.856
200	458097.5762	4494387.031	443	459028.7675	4495993.468
201	458092.2918	4494391.098	444	458989.4078	4496053.996
202	458088.9157	4494394.869	445	458982.7019	4496064.302
203	458082.5178	4494407.598	446	458976.3521	4496073.181
204	458069.8985	4494428.566	447	458970.5331	4496081.256
205	458063.0578	4494443.885	448	458964.3039	4496094.276
206	458054.786	4494459.073	449	458963.4214	4496097.441
207	458048.4953	4494472.546	450	458963.1785	4496100.19
208	458043.2915	4494483.493	451	458963.3589	4496102.943
209	458040.2545	4494490.019	452	458966.1044	4496115.509
210	458038.2731	4494496.769	453	458967.8371	4496136.03
211	458038.1937	4494503.753	454	458968.7392	4496151.06
212	458038.2516	4494517.298	455	458968.2808	4496158.504
213	458041.0866	4494535.933	456	458966.9035	4496166.627
214	458044.9582	4494544.443	457	458965.7085	4496171.999
215	458051.9681	4494556.163	458	458964.0541	4496178.737
216	458062.8916	4494572.689	459	458961.987	4496185.237
217	458071.9726	4494588.401	460	458960.7432	4496191.552
218	458076.3673	4494597.446	461	458960.4689	4496197.385
219	458080.5365	4494603.049	462	458960.6278	4496201.774
220	458086.0253	4494608.931	463	458961.0322	4496203.729
221	458091.7455	4494617.726	464	458961.9136	4496206.667
222	458099.0071	4494632.513	465	458963.027	4496208.317
223	458106.2244	4494649.262	466	458965.5467	4496211.177
224	458108.2655	4494655.899	467	459007.9018	4496246.351
225	458108.6924	4494664.899	468	459019.3926	4496255.334
226	458107.5382	4494673.352	469	459020.4212	4496256.322
227	458104.2738	4494681.251	470	459057.823	4496291.438
228	458098.2981	4494694.94	471	459061.9387	4496294.973
229	458095.5298	4494705.755	472	459074.7825	4496305.391
230	458094.2795	4494721.103	473	459101.5245	4496326.727
231	458093.1062	4494731.248	474	459109.0427	4496332.227
232	458091.9688	4494738.219	475	459152.5073	4496335.816
233	458090.1965	4494745.184	476	459552.8971	4496035.164
234	458087.5826	4494751.715	477	459846.4431	4496121.735
235	458082.8117	4494761.82	478	460438.9417	4495818.996
236	458074.8257	4494775.486	479	460351.2288	4495649.392
237	458068.4428	4494786.486	480	460464.3625	4495166.88
238	458063.2883	4494793.094	481	460551.1479	4494741.694
239	458057.3475	4494799.059	482	460824.5548	4494000.705
240	458047.8537	4494810.379	483	461128.5993	4493726.701
241	458045.1158	4494814.295	484	461222.5653	4493700.734
242	458042.672	4494819.823	485	458488.3978	4492422.964

243	458040.0615	4494828.391	486	458466.6405	4492279.312
-----	-------------	-------------	-----	-------------	-------------

Zona 2					
Njësia Administrative Shushicë					
Nr	X	y	Nr	X	y
1	458049.8001	4490258.197	83	458390.079	4491207.24
2	458126.9432	4490576.042	84	458390.4134	4491215.075
3	458131.8668	4490587.873	85	458392.9073	4491237.749
4	458136.4358	4490595.544	86	458399.2178	4491286.382
5	458140.8222	4490600.673	87	458400.3172	4491320.046
6	458153.2044	4490611.679	88	458401.6616	4491332.125
7	458157.4007	4490614.901	89	458404.2685	4491342.447
8	458160.5328	4490618.64	90	458409.6866	4491361.887
9	458162.3575	4490621.042	91	458414.002	4491376.11
10	458164.0364	4490624.632	92	458415.1325	4491393.054
11	458165.7242	4490627.429	93	458411.4116	4491430.579
12	458167.0287	4490629.032	94	458408.2769	4491468.734
13	458168.8654	4490630.375	95	458409.3164	4491526.312
14	458170.971	4490631.325	96	458410.8562	4491539.881
15	458174.5346	4490632.027	97	458416.363	4491563.545
16	458178.0966	4490632.861	98	458424.7889	4491590.36
17	458182.7197	4490633.442	99	458426.9623	4491608.639
18	458186.934	4490635.078	100	458435.7336	4491630.67
19	458191.4023	4490637.642	101	458444.5784	4491653.205
20	458196.1141	4490642.06	102	458452.6923	4491684.197
21	458206.9273	4490650.596	103	458453.7193	4491705.584
22	458216.5658	4490656.99	104	458452.9286	4491737.956
23	458229.7492	4490672.523	105	458451.3332	4491754.993
24	458241.5045	4490692.546	106	458438.2098	4491792.411
25	458246.9497	4490702.264	107	458434.1762	4491821.466
26	458250.5765	4490709.051	108	458431.5283	4491844.981
27	458253.0519	4490712.386	109	458429.8241	4491855.279
28	458256.7161	4490715.867	110	458421.3897	4491875.819
29	458260.2452	4490719.611	111	458409.9815	4491905.221
30	458263.3683	4490724.143	112	458408.3085	4491909.533
31	458266.484	4490729.337	113	458399.4311	4491936.086
32	458273.8765	4490739.986	114	458393.2054	4491960.156
33	458278.8628	4490748.191	115	458391.6727	4491978.657
34	458283.7541	4490755.442	116	458391.9132	4491986.597
35	458287.5151	4490759.718	117	458394.4609	4491995.223
36	458292.2448	4490764.56	118	458396.0615	4491999.871
37	458301.6807	4490780.29	119	458400.6343	4492004.883
38	458305.6706	4490788.985	120	458408.8405	4492010.268
39	458309.1558	4490802.272	121	458420.2819	4492021.972
40	458310.4857	4490806.309	122	458429.3198	4492032.902
41	458311.7242	4490809.074	123	458434.6352	4492039.331
42	458316.3577	4490817.404	124	458442.7813	4492050.005
43	458319.2827	4490825.388	125	458451.2018	4492065.644

44	458321.1304	4490831.314	126	458454.3206	4492082.213
45	458325.9443	4490849.253	127	458462.5875	4492105.555
46	458328.1757	4490859.436	128	458471.4342	4492130.259
47	458328.4958	4490860.896	129	458480.4793	4492172.426
48	458331.1213	4490868.624	130	458484.2354	4492191.119
49	458331.4809	4490874.236	131	458487.6577	4492204.253
50	458331.3114	4490879.843	132	458488.3432	4492213.785
51	458332.568	4490890.333	133	458487.0492	4492222.898
52	458333.9087	4490898.083	134	458481.7291	4492237.123
53	458334.1809	4490909.064	135	458476.7874	4492252.94
54	458334.0248	4490922.82	136	458469.4112	4492273.492
55	458331.5676	4490941.178	137	458466.6405	4492279.312
56	458328.2471	4490957.534	138	458479.076	4492361.417
57	458327.7899	4490969.891	139	458488.3978	4492422.964
58	458327.7445	4490971.515	140	461222.5653	4493700.734
59	458327.2849	4490987.994	141	461639.4077	4493747.205
60	458327.7191	4490996.359	142	461874.315	4493108.639
61	458329.227	4491003.36	143	462060.2968	4493103.162
62	458332.0221	4491012.556	144	462410.9623	4492962.961
63	458339.3375	4491029.994	145	462599.6613	4493052.372
64	458347.9452	4491050.292	146	462907.5617	4493002.748
65	458351.616	4491057.788	147	462552.5706	4491852.844
66	458356.4864	4491065.876	148	462239.8822	4491655.787
67	458365.9057	4491082.986	149	462356.5669	4490401.204
68	458376.6542	4491103.097	150	462302.2753	4489501.344
69	458377.6745	4491104.59	151	463279.6912	4489299.954
70	458388.7696	4491110.112	152	463300.7073	4488116.375
71	458397.1363	4491114.176	153	463569.5009	4487834.852
72	458401.5514	4491116.766	154	463277.8446	4487455.91
73	458412.5729	4491124.668	155	462836.3549	4487449.716
74	458416.3603	4491126.616	156	462251.3599	4486527.86
75	458419.5147	4491128.398	157	462103.7754	4485655.429
76	458421.5672	4491129.374	158	462363.1431	4484740.925
77	458422.9847	4491130.342	159	458878.8522	4484905.603
78	458422.9703	4491131.612	160	458838.8841	4488338.458
79	458414.7744	4491133.869	161	458056.2598	4490232.416
80	458406.6407	4491151.237	162	458048.2483	4490251.803
81	458394.1555	4491189.551	163	458049.8001	4490258.197
82	458390.5839	4491200.05			

Zona 3					
Njësia Administrative Qendër Vlorë					
Nr	X	y	Nr	X	y
1	458189.3125	4473537.947	337	457536.6933	4487204.549
2	458183.0031	4474095.711	338	457540.857	4487222.321
3	458805.4321	4476203.162	339	457540.768	4487238.863
4	458893.0897	4476499.958	340	457540.6144	4487252.406
5	458590.5792	4480594.793	341	457540.1216	4487258.538
6	458337.4527	4480963.92	342	457541.4589	4487271.252
7	458573.34	4482637.247	343	457543.6762	4487281.013
8	458207.1138	4483915.278	344	457547.1489	4487292.057
9	456589.5396	4483626.129	345	457552.5093	4487304.605
10	456378.0848	4484049.641	346	457553.5377	4487311.892
11	456379.5698	4484048.666	347	457554.9038	4487322.066
12	456404.2734	4484039.819	348	457554.8946	4487341.537
13	456420.983	4484036.04	349	457552.6565	4487370.93
14	456434.8432	4484038.578	350	457549.6712	4487391.553
15	456449.8713	4484043.114	351	457546.0584	4487403.587
16	456467.6543	4484049.664	352	457531.0417	4487438.643
17	456493.4804	4484057.695	353	457526.1735	4487448.006
18	456513.2778	4484058.498	354	457520.8205	4487462.565
19	456527.4687	4484059.073	355	457517.5095	4487474.591
20	456539.3496	4484061.191	356	457515.7118	4487493.142
21	456550.6793	4484084.787	357	457516.3864	4487503.626
22	456616.2122	4484216.579	358	457516.8104	4487508.234
23	456667.9372	4484303.549	359	457518.2028	4487511.424
24	456677.4122	4484316.614	360	457520.6917	4487515.897
25	456702.7147	4484343.236	361	457526.3441	4487521.358
26	456870.0117	4484479.944	362	457530.4293	4487525.055
27	456872.857	4484483.703	363	457539.4474	4487528.755
28	456872.3738	4484502.148	364	457549.1647	4487530.347
29	456872.2767	4484510.718	365	457563.1003	4487533.257
30	456871.2343	4484518.643	366	457574.0658	4487536.767
31	456869.5987	4484522.91	367	457588.1912	4487541.584
32	456864.0856	4484533.165	368	457601.0637	4487544.904
33	456860.9981	4484539.48	369	457606.1425	4487544.962
34	456842.0462	4484570.694	370	457612.2793	4487545.031
35	456829.3888	4484590.392	371	457616.74	4487543.6
36	456816.7917	4484604.799	372	457625.2238	4487542.004
37	456811.1197	4484615.053	373	457634.9845	4487539.786
38	456807.8556	4484622.952	374	457642.5979	4487540.296
39	456806.479	4484627.698	375	457657.18	4487542.154
40	456805.5985	4484635.36	376	457669.0042	4487544.617
41	456805.5325	4484641.18	377	457681.7252	4487551.957
42	456808.6138	4484649.416	378	457685.2675	4487556.865
43	456813.3791	4484658.839	379	457688.7569	4487566.428
44	456825.1146	4484673.788	380	457697.1547	4487591.074

45	456838.7105	4484687.963	381	457704.009	4487615.231
46	456851.513	4484702.129	382	457705.4504	4487628.105
47	456857.2365	4484710.66	383	457706.1272	4487652.399
48	456859.2715	4484717.826	384	457706.7518	4487681.295
49	456862.0674	4484727.91	385	457705.563	4487702.139
50	456862.4704	4484739.026	386	457703.8978	4487708.998
51	456859.1252	4484754.068	387	457702.595	4487718.904
52	456855.1982	4484765.994	388	457702.3818	4487726.045
53	456853.2313	4484771.475	389	457702.134	4487736.227
54	456852.9812	4484774.858	390	457703.054	4487748.407
55	456852.9405	4484778.456	391	457703.0917	4487756.741
56	456853.5346	4484782.06	392	457702.2382	4487762.022
57	456855.1963	4484784.83	393	457701.0686	4487767.174
58	456857.9137	4484787.824	394	457694.8593	4487782.818
59	456861.2683	4484790.614	395	457678.455	4487815.648
60	456868.6479	4484795.646	396	457668.9561	4487835.219
61	456870.6078	4484797.785	397	457666.2089	4487844.183
62	456875.4399	4484803.263	398	457664.371	4487854.612
63	456881.2525	4484810.985	399	457664.1457	4487862.81
64	456884.7456	4484817.903	400	457664.1984	4487869.821
65	456886.9279	4484823.748	401	457664.5352	4487875.116
66	456888.5258	4484834.48	402	457666.0518	4487881.351
67	456889.6278	4484842.297	403	457666.6396	4487887.839
68	456889.849	4484857.776	404	457667.9037	4487893.012
69	456889.9321	4484873.782	405	457669.5629	4487898.322
70	456891.0044	4484883.329	406	457671.3501	4487904.03
71	456892.9224	4484889.171	407	457671.3966	4487912.761
72	456894.7366	4484892.499	408	457672.2934	4487931.66
73	456897.6057	4484896.103	409	457673.1088	4487943.733
74	456900.3516	4484898.912	410	457675.1244	4487952.618
75	456904.557	4484901.34	411	457677.5698	4487958.598
76	456910.7252	4484905.643	412	457680.0243	4487963.785
77	456920.4449	4484911.706	413	457684.7016	4487971.246
78	456931.1477	4484924.393	414	457691.4861	4487979.524
79	456942.8815	4484939.473	415	457706.8756	4487997.268
80	456953.3364	4484950.703	416	457712.6524	4488005.746
81	456960.6185	4484956.165	417	457717.322	4488013.894
82	456969.1689	4484960.362	418	457720.7307	4488021.235
83	456982.4641	4484966.069	419	457723.0251	4488028.88
84	456995.0815	4484973.223	420	457724.6646	4488038.264
85	457002.8248	4484978.601	421	457726.4575	4488048.125
86	457012.8343	4484990.468	422	457728.0882	4488058.303
87	457018.6705	4485000.719	423	457733.4296	4488080.286
88	457021.7487	4485009.22	424	457734.4127	4488086.911
89	457022.0795	4485015.044	425	457734.3287	4488094.318
90	457021.2364	4485019.4	426	457733.1325	4488106.473
91	457017.1667	4485028.348	427	457733.2356	4488120.707

92	457015.1408	4485032.029	428	457733.3416	4488130.021
93	457011.8736	4485040.193	429	457734.4649	4488142.944
94	457009.663	4485048.501	430	457734.778	4488171.307
95	457009.2183	4485052.729	431	457734.3843	4488196.7
96	457009.0336	4485057.357	432	457735.0482	4488212.792
97	457009.1178	4485061.591	433	457736.0826	4488233.545
98	457011.6496	4485068.36	434	457735.5562	4488242.64
99	457019.8945	4485087.819	435	457734.4573	4488246.225
100	457025.7361	4485104.605	436	457733.3103	4488254.043
101	457032.2617	4485126.857	437	457733.2239	4488261.661
102	457036.5592	4485139.816	438	457735.4232	4488268.67
103	457039.8035	4485152.34	439	457740.1654	4488279.729
104	457039.5511	4485155.935	440	457748.0557	4488293.152
105	457038.0314	4485159.304	441	457764.6751	4488320.643
106	457034.3931	4485162.86	442	457796.4158	4488377.114
107	457027.7731	4485168.076	443	457819.0478	4488410.97
108	457012.6286	4485178.487	444	457828.8835	4488430.129
109	457005.5889	4485187.97	445	457836.645	4488445.561
110	456986.07	4485217.842	446	457840.4808	4488457.245
111	456964.2105	4485250.002	447	457849.6008	4488469.518
112	456936.9857	4485288.715	448	457852.156	4488477.483
113	456928.874	4485304.165	449	457852.591	4488494.956
114	456925.0504	4485325.814	450	457850.2168	4488538.241
115	456923.6871	4485334.052	451	457850.4667	4488565.211
116	456924.2321	4485341.995	452	457850.4397	4488567.591
117	456926.382	4485348.369	453	457850.7085	4488571.88
118	456930.1065	4485355.871	454	457851.1703	4488573.155
119	456935.2323	4485365.771	455	457854.8719	4488575.528
120	456938.1669	4485372.947	456	457857.4737	4488577.195
121	456939.6658	4485380.742	457	457861.8402	4488584.07
122	456939.1051	4485388.196	458	457869.7959	4488596.383
123	456938.2684	4485391.996	459	457872.1009	4488603.076
124	456935.3648	4485396.09	460	457873.9207	4488610.557
125	456929.9111	4485401.108	461	457877.0694	4488620.894
126	456906.5304	4485414.887	462	457879.409	4488638.54
127	456896.3369	4485417.946	463	457878.3859	4488649.395
128	456887.8892	4485421.025	464	457877.063	4488663.434
129	456880.6933	4485425.705	465	457873.3407	4488679.94
130	456876.841	4485429.471	466	457867.2978	4488690.242
131	456874.2459	4485434.362	467	457865.0784	4488699.317
132	456872.1232	4485439.576	468	457865.0232	4488704.184
133	456870.7833	4485445.752	469	457864.9776	4488708.205
134	456870.6969	4485453.37	470	457866.8269	4488713.094
135	456870.8573	4485475.677	471	457869.5179	4488718.415
136	456872.582	4485491.569	472	457872.6009	4488726.493
137	456874.4271	4485496.828	473	457874.609	4488736.039
138	456876.1406	4485499.705	474	457874.8508	4488741.467

139	456879.1254	4485502.437	475	457874.4241	4488751.092
140	456882.4116	4485506.602	476	457873.7331	4488774.682
141	456888.0838	4485510.317	477	457875.2425	4488803.324
142	456900.2452	4485515.693	478	457875.1994	4488816.446
143	456912.255	4485520.432	479	457876.6334	4488825.284
144	456916.8217	4485523.659	480	457877.9687	4488833.514
145	456918.6884	4485527.013	481	457878.2464	4488836.404
146	456920.2216	4485531.793	482	457878.8952	4488848.039
147	456919.3267	4485543.824	483	457878.7902	4488872.474
148	456919.8847	4485550.603	484	457879.5249	4488883.687
149	456920.4669	4485555.265	485	457881.4166	4488889.956
150	456921.9026	4485559.303	486	457882.5707	4488892.828
151	456924.1895	4485562.927	487	457883.4281	4488895.673
152	456928.5902	4485566.786	488	457884.7965	4488902.182
153	456935.5279	4485570.886	489	457886.9718	4488910.972
154	456945.2118	4485575.44	490	457887.5773	4488914.462
155	456955.2998	4485581.692	491	457887.4514	4488916.764
156	456968.7159	4485593.062	492	457887.0666	4488918.936
157	456974.5548	4485600.747	493	457885.0487	4488928.913
158	456980.3984	4485608.009	494	457884.3383	4488935.572
159	456987.5022	4485616.132	495	457884.2967	4488939.222
160	456989.1159	4485623.134	496	457884.2598	4488942.476
161	456987.1818	4485632.977	497	457884.8533	4488946.133
162	456984.7051	4485636.116	498	457885.2881	4488949.789
163	456982.0741	4485641.453	499	457885.8694	4488951.903
164	456977.2982	4485660.825	500	457886.3954	4488955.744
165	456968.4857	4485691.413	501	457886.6978	4488959.775
166	456964.7178	4485706.397	502	457886.1869	4488966.199
167	456963.1795	4485715.762	503	457884.4053	4488970.958
168	456965.337	4485730.813	504	457881.3724	4488975.95
169	456968.74	4485747.995	505	457875.0677	4488983.683
170	456973.8289	4485765.831	506	457861.5286	4489000.639
171	456975.7818	4485780.244	507	457857.0217	4489005.437
172	456976.4819	4485793.162	508	457850.8698	4489010.166
173	456973.5904	4485807.855	509	457846.8786	4489013.745
174	456972.4628	4485813.98	510	457835.097	4489026.204
175	456973.8385	4485823.307	511	457820.8193	4489044.137
176	456976.1764	4485841.112	512	457814.5277	4489052.737
177	456979.5362	4485862.102	513	457810.0704	4489058.83
178	456983.025	4485899.715	514	457804.1934	4489063.843
179	456985.8869	4485908.637	515	457795.4728	4489067.659
180	456989.8428	4485914.396	516	457787.6434	4489070.902
181	457002.2224	4485923.849	517	457784.9748	4489071.735
182	457024.8826	4485941.249	518	457779.4884	4489074.186
183	457045.3149	4485956.634	519	457769.9149	4489079.496
184	457073.2845	4485972.401	520	457756.7943	4489088.712
185	457092.4526	4485980.449	521	457752.4533	4489093.584

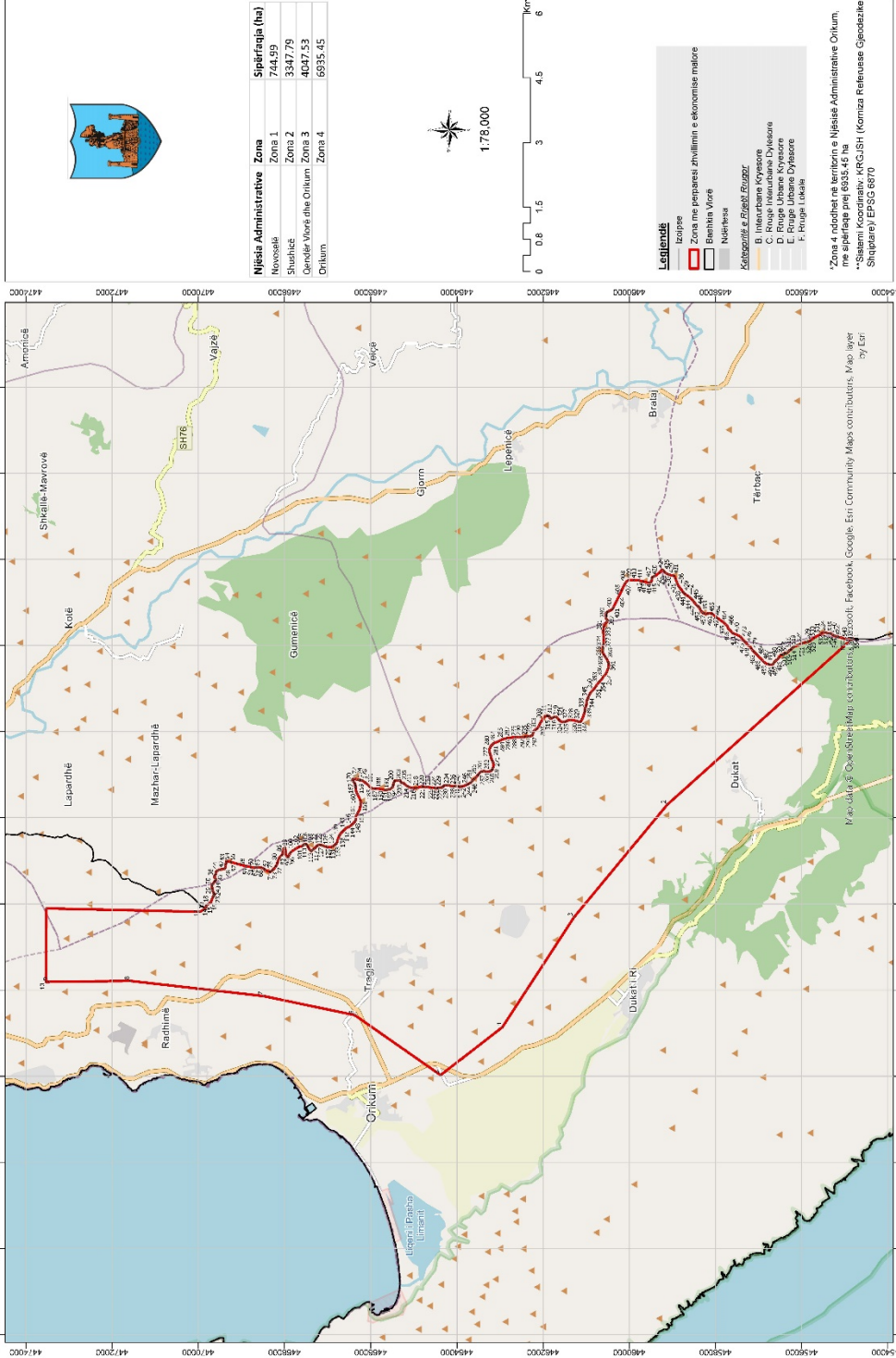
186	457117.9069	4485994.071	522	457747.0031	4489098.284
187	457133.7108	4486000.176	523	457743.682	4489101.531
188	457144.6613	4486004.56	524	457738.9386	4489106.943
189	457159.8275	4486008.568	525	457736.8193	4489110.967
190	457171.4513	4486010.022	526	457736.4285	4489112.253
191	457182.2561	4486013.716	527	457736.3848	4489116.804
192	457192.6746	4486016.48	528	457737.9714	4489124.848
193	457201.1196	4486018.295	529	457741.9211	4489139.444
194	457211.0406	4486018.276	530	457742.1425	4489144.548
195	457225.3733	4486018.709	531	457740.0316	4489163.484
196	457234.7085	4486021.354	532	457731.4314	4489186.357
197	457247.997	4486025.315	533	457726.5127	4489200.163
198	457254.3149	4486028.085	534	457724.8608	4489205.859
199	457257.4676	4486030.025	535	457722.9708	4489213.88
200	457258.3659	4486034.797	536	457722.9132	4489218.958
201	457258.6746	4486049.563	537	457723.3227	4489226.704
202	457258.3432	4486064.797	538	457725.6418	4489232.154
203	457259.917	4486104.244	539	457733.7174	4489243.224
204	457261.7692	4486127.546	540	457740.3815	4489250.443
205	457265.6104	4486162.087	541	457745.863	4489256.987
206	457269.0221	4486190.158	542	457754.8936	4489270.341
207	457270.072	4486195.566	543	457760.2396	4489280.049
208	457271.6015	4486200.663	544	457764.1886	4489288.986
209	457275.1906	4486206.101	545	457766.2835	4489297.255
210	457288.8707	4486217.526	546	457767.7193	4489306.292
211	457300.9637	4486228.933	547	457767.8047	4489326.416
212	457306.2855	4486236.02	548	457768.2872	4489330.522
213	457316.489	4486250.739	549	457769.5617	4489334.77
214	457325.791	4486270.315	550	457770.1871	4489337.951
215	457336.6005	4486287.581	551	457771.4661	4489341.802
216	457339.4743	4486295.444	552	457772.7527	4489344.991
217	457340.8957	4486300.751	553	457773.7537	4489350.029
218	457338.8945	4486317.336	554	457774.8301	4489360.094
219	457337.9281	4486327.907	555	457775.7785	4489369.761
220	457339.0994	4486336.597	556	457774.6727	4489389.992
221	457342.5601	4486348.7	557	457772.8964	4489406.639
222	457348.2645	4486368.236	558	457769.9424	4489417.191
223	457350.8451	4486383.292	559	457760.1685	4489433.765
224	457349.6121	4486394.035	560	457751.8303	4489445.84
225	457347.6188	4486401.843	561	457743.8964	4489457.259
226	457345.4283	4486408.379	562	457742.661	4489461.213
227	457343.6561	4486415.343	563	457742.356	4489464.781
228	457341.4416	4486423.995	564	457742.311	4489468.749
229	457340.9153	4486433.09	565	457742.9348	4489472.063
230	457339.7899	4486439.003	566	457743.6938	4489475.113
231	457337.3901	4486445.325	567	457744.7292	4489478.531
232	457331.0017	4486457.94	568	457744.2422	4489508.376

233	457325.4471	4486471.845	569	457744.5387	4489528.882
234	457323.0269	4486475.31	570	457744.7989	4489565.222
235	457318.8374	4486480.818	571	457746.4762	4489575.929
236	457312.2564	4486487.251	572	457747.2885	4489581.418
237	457304.7537	4486490.976	573	457750.382	4489591.037
238	457298.8563	4486493.131	574	457756.0994	4489603.132
239	457294.8867	4486493.245	575	457768.1979	4489626.532
240	457291.7143	4486493.05	576	457775.6116	4489641.476
241	457287.9143	4486492.214	577	457787.8648	4489663.835
242	457283.9608	4486490.899	578	457789.383	4489668.476
243	457268.2547	4486485.493	579	457789.4296	4489673.379
244	457258.5494	4486482.843	580	457789.6147	4489679.217
245	457248.4446	4486478.073	581	457789.4836	4489682.599
246	457241.2809	4486475.24	582	457789.2406	4489688.869
247	457234.3095	4486474.103	583	457789.6284	4489695.498
248	457225.2126	4486473.788	584	457790.9762	4489709.8
249	457206.1408	4486475.9	585	457790.8757	4489718.656
250	457194.6729	4486479.368	586	457789.7439	4489728.352
251	457189.7817	4486481.429	587	457786.6897	4489740.754
252	457185.0542	4486487.724	588	457784.2331	4489748.79
253	457181.5867	4486494.881	589	457783.2784	4489753.159
254	457180.0406	4486500.578	590	457782.9536	4489755.262
255	457179.3313	4486507.13	591	457782.085	4489761.866
256	457181.7939	4486513.931	592	457780.8762	4489767.199
257	457185.7498	4486519.69	593	457780.5918	4489773.825
258	457191.5839	4486527.799	594	457780.6924	4489775.795
259	457200.9577	4486541.027	595	457781.2787	4489782.415
260	457206.585	4486553.961	596	457781.7732	4489785.463
261	457209.5213	4486560.979	597	457783.7139	4489790.247
262	457211.0183	4486568.932	598	457787.3322	4489797.987
263	457211.0584	4486579.409	599	457792.9224	4489815.805
264	457209.8277	4486599.864	600	457793.5548	4489820.809
265	457205.0833	4486621.636	601	457793.5047	4489825.222
266	457202.6171	4486638.142	602	457792.8492	4489828.928
267	457200.0421	4486655.256	603	457791.4403	4489832.293
268	457198.3523	4486664.284	604	457787.2326	4489842.008
269	457194.2747	4486673.921	605	457784.8331	4489850.139
270	457189.2773	4486680.69	606	457784.6003	4489851.844
271	457179.8444	4486689.001	607	457778.8391	4489868.781
272	457164.0817	4486702.579	608	457777.162	4489876.698
273	457149.0827	4486718.811	609	457776.9618	4489880.347
274	457142.763	4486727.866	610	457777.09	4489883.047
275	457138.1747	4486735.883	611	457778.0116	4489885.756
276	457137.0582	4486741.029	612	457779.5753	4489887.837
277	457136.4885	4486748.979	613	457781.1765	4489890.08
278	457136.8358	4486753.348	614	457784.3412	4489892.981
279	457139.0287	4486758.267	615	457820.6171	4489912.602

280	457144.3418	4486767.984	616	457823.899	4489914.747
281	457149.8172	4486775.056	617	457842.505	4489926.908
282	457154.801	4486778.817	618	457850.2542	4489931.758
283	457161.6215	4486783.92	619	457859.0226	4489940.059
284	457172.1198	4486791.315	620	457862.8128	4489946.279
285	457182.6165	4486798.841	621	457864.8661	4489949.649
286	457188.3595	4486805.187	622	457866.1482	4489953.235
287	457194.0059	4486811.177	623	457867.8391	4489955.767
288	457201.5112	4486821.209	624	457876.7577	4489962.482
289	457212.2823	4486841.861	625	457885.9083	4489971.488
290	457217.6814	4486855.32	626	457899.0548	4489985.307
291	457220.735	4486865.99	627	457910.1105	4489998.342
292	457224.721	4486878.416	628	457927.3019	4490014.233
293	457228.0867	4486889.565	629	457937.9008	4490022.079
294	457231.4793	4486898.334	630	457950.0772	4490030.788
295	457239.1446	4486908.263	631	457960.5638	4490038.281
296	457252.3423	4486921.277	632	457964.3274	4490042.446
297	457263.7824	4486934.264	633	457968.2452	4490046.781
298	457269.6648	4486940.442	634	457973.6775	4490050.653
299	457273.4451	4486943.025	635	457985.9976	4490056.031
300	457276.4461	4486944.329	636	457991.9148	4490059.484
301	457280.561	4486945.407	637	457997.5087	4490062.749
302	457284.5216	4486946.087	638	458005.6242	4490070.29
303	457290.5481	4486946.552	639	458008.9165	4490078.582
304	457301.8681	4486947.72	640	458011.3382	4490088.98
305	457310.8573	4486948.218	641	458013.8233	4490109.128
306	457323.0236	4486948.489	642	458019.2774	4490131.649
307	457331.4822	4486949.114	643	458023.683	4490144.397
308	457336.5051	4486949.435	644	458026.2693	4490149.612
309	457341.2499	4486950.944	645	458034.4769	4490163.039
310	457345.8565	4486952.98	646	458040.5308	4490170.409
311	457356.2675	4486956.405	647	458045.6596	4490175.656
312	457371.0238	4486961.582	648	458049.3179	4490179.398
313	457381.304	4486964.873	649	458055.0739	4490186.597
314	457393.7004	4486968.188	650	458058.0619	4490191.393
315	457406.3717	4486970.58	651	458059.7407	4490194.983
316	457414.3073	4486970.67	652	458060.3675	4490198.033
317	457419.2084	4486970.065	653	458060.303	4490203.72
318	457426.1098	4486968.026	654	458058.9926	4490214.287
319	457440.7109	4486963.562	655	458056.6742	4490231.167
320	457444.0249	4486962.939	656	458056.2598	4490232.415
321	457445.6061	4486963.486	657	458838.8841	4488338.458
322	457445.5986	4486964.147	658	458878.8522	4484905.603
323	457444.7281	4486967.221	659	462363.1431	4484740.925
324	457452.7324	4486975.248	660	462281.1712	4484368.241
325	457481.7031	4487026.371	661	462666.974	4483104.529
326	457496.447	4487051.3	662	463456.7688	4480834.536

327	457501.4081	4487061.727	663	461790.7878	4480839.377
328	457506.5426	4487080.198	664	461628.5922	4480757.31
329	457508.1425	4487093.073	665	461461.0511	4480541.719
330	457508.7472	4487109.747	666	461394.4966	4480243.306
331	457509.4651	4487116.422	667	461717.6831	4479966.682
332	457510.6754	4487121.674	668	460829.9388	4478783.146
333	457513.9255	4487129.012	669	460430.2297	4478021.99
334	457521.5187	4487145.289	670	460373.7019	4475618.071
335	457527.2599	4487161.585	671	459895.6181	4473522.973
336	457532.7131	4487182.281	672	458189.3125	4473537.947

ZONA ME PËRPARËSI ZHVILLIMIN E EKONOMISË MALORE
ZONA 4, NJESIA ADMINISTRATIVE ORIKUM, BASHKIA VLORE, QARKU VLORE



Zona 4					
Njësia Administrative Orikum					
Nr	X	y	Nr	X	y
1	466165.583	4454818.572	278	463537.8496	4463251.076
2	462300.7005	4459125.804	279	463607.8071	4463243.396
3	459687.3682	4461286.955	280	463649.2924	4463225.868
4	457137.7981	4462945.403	281	463687.8053	4463190.308
5	456025.2387	4464377.936	282	463730.612	4463149.505
6	457415.9367	4466372.162	283	463766.5947	4463056.75
7	457860.1018	4468483.28	284	463801.244	4462988.329
8	458211.4807	4471578.216	285	463832.7896	4462913.521
9	458190.1673	4473462.383	286	463846.173	4462853.329
10	458189.3125	4473537.947	287	463859.9388	4462759.265
11	459895.6181	4473522.973	288	463870.5172	4462666.223
12	459815.9135	4469963.11	289	463874.1429	4462610.357
13	459880.8289	4469845.497	290	463874.362	4462606.982
14	459920.3272	4469830.569	291	463868.5965	4462555.043
15	459958.577	4469818.297	292	463873.44	4462501.106
16	459974.6461	4469801.541	293	463873.93	4462457.707
17	459990.799	4469777.375	294	463886.0278	4462417.615
18	460011.2456	4469747.964	295	463887.6718	4462365.76
19	460044.526	4469707.053	296	463892.3958	4462322.409
20	460094.4793	4469689.621	297	463901.3062	4462283.339
21	460154.0428	4469664.887	298	463914.3549	4462252.786
22	460171.0746	4469656.61	299	463953.6992	4462237.35
23	460192.4243	4469640.972	300	463988.7736	4462225.042
24	460223.1808	4469636.026	301	464033.4702	4462204.374
25	460254.8762	4469641.678	302	464045.4006	4462179.101
26	460284.3468	4469656.832	303	464070.1767	4462141.269
27	460315.9704	4469668.835	304	464117.1457	4462106.864
28	460351.8878	4469675.593	305	464160.8633	4462090.863
29	460405.8238	4469680.437	306	464170.2808	4462087.416
30	460443.9181	4469681.926	307	464223.5889	4462054.141
31	460460.9978	4469669.416	308	464285.4369	4462014.611
32	460480.2544	4469651.637	309	464321.6894	4461991.73
33	460501.6279	4469633.881	310	464356.0638	4461947.654
34	460521.9072	4469619.289	311	464369.1483	4461913.926
35	460542.1863	4469604.698	312	464367.4853	4461873.678
36	460565.617	4469592.259	313	464346.5541	4461852.269
37	460597.1808	4469609.554	314	464323.3145	4461847.772
38	460632.9188	4469632.19	315	464306.5933	4461828.527
39	460661.678	4469616.635	316	464307.444	4461825.281
40	460690.4611	4469598.964	317	464315.4438	4461794.75
41	460723.3706	4469590.866	318	464330.6455	4461761.045
42	460746.7056	4469586.896	319	464343.7539	4461725.199
43	460774.4662	4469566.036	320	464341.9236	4461699.771
44	460788.2575	4469528.993	321	464321.1118	4461667.776

45	460794.6295	4469511.878	322	464277.0365	4461633.402
46	460800.269	4469481.241	323	464243.5225	4461601.264
47	460805.0773	4469430.48	324	464222.9496	4461548.099
48	460811.8592	4469392.446	325	464227.6616	4461505.806
49	460844.9004	4469372.705	326	464240.8656	4461461.492
50	460884.1369	4469366.797	327	464264.7026	4461413.063
51	460933.9586	4469361.008	328	464269.5818	4461355.951
52	460978.4877	4469355.16	329	464250.3518	4461223.207
53	460992.2962	4469351.081	330	464232.7513	4461188.073
54	460989.4078	4469325.641	331	464231.0764	4461148.884
55	460977.5928	4469273.049	332	464235.5614	4461126.703
56	460967.2335	4469226.937	333	464301.6313	4461088.279
57	460930.5989	4469096.309	334	464387.7176	4461058.55
58	460874.6794	4468895.583	335	464446.163	4461039.095
59	460872.9778	4468884.838	336	464465.276	4461034.017
60	460855.8708	4468776.813	337	464497.0434	4461033.317
61	460840.735	4468711.006	338	464529.9053	4461029.453
62	460842.1883	4468676.087	339	464572.4729	4461009.82
63	460844.6643	4468644.356	340	464610.6989	4460999.664
64	460848.1987	4468612.637	341	464656.2868	4460993.827
65	460839.3541	4468552.194	342	464697.6047	4460991.118
66	460838.3331	4468545.018	343	464747.5343	4460975.801
67	460835.4312	4468524.625	344	464785.5387	4460959.042
68	460821.0427	4468486.351	345	464794.3479	4460955.157
69	460799.1132	4468459.637	346	464829.4701	4460938.615
70	460782.4761	4468432.983	347	464855.006	4460927.258
71	460754.6023	4468370.208	348	464887.9992	4460911.75
72	460744.4479	4468331.982	349	464939.3098	4460867.866
73	460765.9769	4468300.466	350	464973.5527	4460835.434
74	460789.5513	4468275.325	351	465024.8155	4460795.784
75	460805.6802	4468253.276	352	465088.8164	4460753.102
76	460853.7556	4468214.65	353	465143.3144	4460708.195
77	460877.2343	4468197.977	354	465177.5215	4460678.939
78	460914.5332	4468176.167	355	465222.4452	4460638.158
79	460953.8536	4468162.849	356	465286.4221	4460597.593
80	460995.279	4468150.613	357	465318.5958	4460560.903
81	461045.2441	4468132.122	358	465380.396	4460525.606
82	461087.8357	4468110.372	359	465437.8427	4460500.847
83	461116.7624	4468079.998	360	465493.1007	4460482.415
84	461141.4311	4468051.694	361	465548.2153	4460476.685
85	461176.368	4468043.176	362	465585.2634	4460477.103
86	461187.0786	4468040.565	363	465615.8171	4460490.152
87	461248.6276	4468027.498	364	465653.7566	4460505.401
88	461293.2525	4468013.181	365	465697.9754	4460527.073
89	461309.3096	4467997.483	366	465724.2113	4460547.484
90	461291.4824	4467982.461	367	465755.6921	4460572.188
91	461244.9559	4467977.7	368	465788.3151	4460589.495

92	461188.9505	4467968.598	369	465838.8014	4460618.648
93	461134.0038	4467959.508	370	465866.323	4460618.959
94	461089.7617	4467939.952	371	465892.8337	4460615.023
95	461086.8015	4467920.863	372	465928.895	4460609.078
96	461114.5621	4467900.004	373	465952.1705	4460610.4
97	461147.5313	4467886.614	374	465989.159	4460616.11
98	461190.099	4467866.981	375	466014.671	4460606.871
99	461214.7318	4467841.852	376	466041.2773	4460594.467
100	461258.8484	4467778.832	377	466078.4091	4460587.475
101	461287.9784	4467730.464	378	466163.0428	4460592.665
102	461325.8157	4467661.021	379	466220.179	4460595.427
103	461345.6584	4467591.374	380	466286.7822	4460603.59
104	461359.5865	4467576.711	381	466351.3519	4460604.318
105	461376.738	4467557.849	382	466413.8762	4460598.672
106	461388.6686	4467532.576	383	466445.7752	4460586.328
107	461389.9425	4467513.535	384	466510.1213	4460553.974
108	461380.6192	4467495.433	385	466553.9506	4460516.357
109	461361.7335	4467480.398	386	466563.5251	4460512.23
110	461324.9488	4467456.692	387	466583.6849	4460508.223
111	461287.0818	4467435.092	388	466599.5028	4460513.695
112	461257.6828	4467413.587	389	466631.9706	4460544.762
113	461234.5989	4467395.329	390	466642.5797	4460542.765
114	461233.7561	4467394.275	391	466665.9388	4460536.676
115	461225.2039	4467383.578	392	466682.9229	4460532.633
116	461242.3315	4467366.833	393	466701.9763	4460532.848
117	461258.6455	4467345.741	394	466726.3223	4460533.123
118	461265.2738	4467337.171	395	466754.9263	4460531.329
119	461278.859	4467319.607	396	466776.2997	4460513.573
120	461312.0914	4467282.93	397	466797.8405	4460480.998
121	461347.3572	4467253.686	398	466812.5608	4460441.531
122	461365.6867	4467224.251	399	466838.4432	4460399.477
123	461370.1839	4467201.012	400	466857.1226	4460385.925
124	461365.298	4467164.963	401	466877.9071	4460373.456
125	461364.6097	4467157.194	402	466917.8167	4460354.85
126	461362.4813	4467133.171	403	467038.9593	4460294.459
127	461345.9997	4467092.757	404	467143.5877	4460241.341
128	461329.5539	4467049.166	405	467281.7843	4460177.779
129	461323.5618	4467017.34	406	467365.4399	4460135.533
130	461320.757	4466984.49	407	467428.2511	4460104.482
131	461321.4808	4466918.929	408	467479.4544	4460070.125
132	461338.8714	4466878.897	409	467521.2624	4460024.015
133	461354.0016	4466851.543	410	467523.8259	4459890.653
134	461377.6476	4466820.051	411	467513.3887	4459783.611
135	461403.3149	4466797.051	412	467487.0734	4459676.39
136	461439.4717	4466782.638	413	467463.9099	4459571.321
137	461501.0805	4466764.279	414	467464.4115	4459526.864
138	461571.2531	4466737.547	415	467475.4029	4459490.993

139	461603.1998	4466720.969	416	467534.7757	4459483.194
140	461606.92	4466718.174	417	467564.4501	4459480.353
141	461658.7207	4466679.251	418	467584.7055	4459467.877
142	461697.3533	4466633.107	419	467598.7171	4459445.804
143	461763.7224	4466568.221	420	467607.436	4459423.67
144	461785.5144	4466513.418	421	467616.1192	4459404.712
145	461809.1844	4466479.809	422	467697.7733	4459298.709
146	461841.3941	4466439.944	423	467758.0879	4459251.354
147	461873.5561	4466404.313	424	467761.4068	4459238.688
148	461907.8351	4466368.707	425	467743.6986	4459213.08
149	461939.7817	4466352.129	426	467713.2283	4459192.622
150	461971.6087	4466346.137	427	467691.3098	4459164.85
151	462035.1433	4466344.738	428	467669.4152	4459134.96
152	462077.7468	4466321.929	429	467649.781	4459092.392
153	462111.8106	4466305.375	430	467642.6103	4459071.138
154	462169.4006	4466267.915	431	467625.5349	4458989.429
155	462260.7436	4466241.422	432	467614.5247	4458960.366
156	462305.2249	4466239.807	433	467598.6694	4458951.238
157	462343.3791	4466236.004	434	467540.7433	4458924.648
158	462406.842	4466240.955	435	467478.012	4458901.708
159	462532.6292	4466300.273	436	467418.4032	4458879.004
160	462589.478	4466328.44	437	467361.6012	4458846.604
161	462629.5221	4466344.772	438	467308.0823	4458804.712
162	462690.856	4466350.758	439	467248.2482	4458759.573
163	462709.8972	4466352.032	440	467210.5116	4458726.329
164	462743.7337	4466355.59	441	467185.4295	4458697.463
165	462774.3707	4466361.229	442	467151.0954	4458644.142
166	462800.714	4466372.114	443	467120.8521	4458603.572
167	462825.9508	4466387.22	444	467082.1645	4458560.79
168	462848.0241	4466401.232	445	467039.183	4458523.252
169	462874.3435	4466414.233	446	467001.3987	4458494.242
170	462888.0802	4466416.505	447	466948.9503	4458451.304
171	462900.8661	4466409.239	448	466928.0186	4458429.894
172	462904.209	4466394.456	449	466913.4621	4458406.44
173	462901.3564	4466365.84	450	466890.5329	4458374.421
174	462892.2603	4466327.626	451	466860.942	4458369.853
175	462880.9993	4466293.622	452	466822.0395	4458346.124
176	462874.8755	4466273.439	453	466790.5347	4458323.537
177	462875.1864	4466245.917	454	466764.3462	4458298.892
178	462868.1835	4466209.844	455	466747.6726	4458275.413
179	462856.8507	4466182.191	456	466744.7239	4458255.266
180	462822.434	4466136.281	457	466739.7776	4458224.509
181	462791.1212	4466096.757	458	466741.2899	4458184.297
182	462754.5396	4466055.056	459	466746.9646	4458150.484
183	462728.316	4466033.587	460	466741.3242	4458085.909
184	462696.9552	4465998.298	461	466717.7773	4458054.217
185	462682.5308	4465963.199	462	466659.2643	4457985.803

186	462672.4359	4465919.681	463	466595.7095	4457895.101
187	462670.6896	4465886.843	464	466543.5955	4457822.524
188	462671.4071	4465823.332	465	466486.0694	4457760.473
189	462663.7521	4465751.258	466	466444.1942	4457718.713
190	462648.5799	4465688.626	467	466395.0766	4457708.011
191	462645.9186	4465643.074	468	466359.0335	4457667.187
192	462651.7493	4465595.501	469	466297.9908	4457614.63
193	462659.5295	4465562.771	470	466280.3303	4457584.788
194	462674.6237	4465538.592	471	466253.6087	4457513.557
195	462694.9985	4465515.532	472	466209.0594	4457427.304
196	462719.6312	4465490.403	473	466176.5558	4457399.412
197	462745.1431	4465481.163	474	466130.4585	4457356.546
198	462779.0754	4465476.253	475	466091.699	4457321.636
199	462816.2548	4465465.028	476	466066.5869	4457296.937
200	462846.0605	4465450.544	477	466007.9505	4457248.848
201	462858.8822	4465440.102	478	465984.0425	4457203.433
202	462863.5707	4465399.927	479	465926.8049	4457167.541
203	462867.1767	4465361.856	480	465914.7915	4457159.216
204	462868.5461	4465334.347	481	465891.0898	4457142.79
205	462861.3637	4465314.151	482	465863.9027	4457112.841
206	462837.1255	4465304.35	483	465820.9451	4457073.186
207	462821.3434	4465295.702	484	465781.1392	4457035.684
208	462816.1944	4465282.94	485	465742.3919	4456998.194
209	462811.0812	4465267.003	486	465682.7368	4456937.178
210	462803.9706	4465240.456	487	465645.0241	4456901.817
211	462770.5883	4465196.675	488	465608.3699	4456866.468
212	462738.1451	4465163.49	489	465575.1181	4456811.043
213	462721.6035	4465128.368	490	465562.9889	4456760.091
214	462707.1789	4465093.27	491	465554.7834	4456736.708
215	462697.1318	4465045.517	492	465556.6526	4456695.314
216	462689.2137	4464996.73	493	465569.2364	4456660.902
217	462688.7291	4464945.909	494	465602.4087	4456644.084
218	462697.5798	4464912.133	495	465624.8525	4456625.281
219	462725.9978	4464833.055	496	465655.8479	4456599.165
220	462723.3603	4464785.386	497	465677.4004	4456565.531
221	462711.2439	4464733.376	498	465699.8441	4456546.728
222	462711.7434	4464716.435	499	465731.9698	4456514.272
223	462712.96	4464675.169	500	465780.9601	4456488.358
224	462703.1759	4464604.129	501	465785.3135	4456477.821
225	462692.429	4464524.61	502	465784.446	4456460.873
226	462686.6278	4464475.846	503	465784.6967	4456438.644
227	462689.0437	4464449.407	504	465790.2041	4456419.65
228	462693.6723	4464414.524	505	465800.8848	4456411.301
229	462702.4512	4464387.099	506	465815.716	4456410.41
230	462705.0225	4464346.899	507	465824.2916	4456400.979
231	462722.2097	4464324.862	508	465824.4826	4456384.042
232	462746.8066	4464302.908	509	465821.5458	4456362.836

233	462755.5735	4464276.541	510	465829.2538	4456336.457
234	462758.0612	4464243.751	511	465857.0499	4456312.421
235	462756.3506	4464207.737	512	465876.2704	4456297.817
236	462751.4526	4464172.747	513	465892.3272	4456282.118
237	462738.0744	4464138.719	514	465902.1641	4456254.704
238	462729.1933	4464081.452	515	465921.4204	4456236.924
239	462732.8709	4464037.03	516	465935.3006	4456226.494
240	462735.3466	4464005.299	517	465950.275	4456212.901
241	462727.3446	4463963.921	518	465961.0507	4456193.821
242	462723.5888	4463921.533	519	465974.0399	4456170.822
243	462726.2677	4463871.806	520	466001.3027	4456100.2
244	462756.6949	4463802.279	521	466004.7408	4456076.948
245	462769.7198	4463773.843	522	466014.4585	4456060.12
246	462781.7102	4463743.278	523	466038.104	4456028.627
247	462805.4397	4463704.376	524	466055.6132	4455978.009
248	462820.5696	4463677.022	525	466072.6478	4455916.536
249	462833.4152	4463664.463	526	466078.3582	4455879.548
250	462848.3539	4463654.045	527	466083.9492	4455853.144
251	462871.8205	4463638.431	528	466106.6077	4455815.288
252	462891.0889	4463619.592	529	466130.301	4455779.561
253	462908.3239	4463593.321	530	466180.8457	4455718.819
254	462922.2758	4463576.54	531	466264.2056	4455562.015
255	462947.9909	4463549.306	532	466289.7787	4455531.517
256	462983.2206	4463523.237	533	466303.9572	4455494.624
257	463008.852	4463503.412	534	466306.3845	4455467.126
258	463029.155	4463486.703	535	466298.3102	4455432.1
259	463060.1507	4463460.587	536	466285.9541	4455401.259
260	463075.2926	4463432.175	537	466280.9002	4455380.029
261	463079.8733	4463401.526	538	466281.0793	4455364.151
262	463085.4288	4463378.298	539	466281.2105	4455352.508
263	463077.3313	4463345.388	540	466276.2043	4455327.044
264	463072.4331	4463310.398	541	466265.8101	4455309.988
265	463075.0283	4463268.081	542	466240.7995	4455274.77
266	463085.0808	4463221.614	543	466228.4433	4455243.93
267	463096.9873	4463198.458	544	466220.2258	4455221.606
268	463118.313	4463184.937	545	466209.9509	4455193.965
269	463148.0828	4463173.628	546	466204.9209	4455170.618
270	463171.5374	4463159.072	547	466196.775	4455141.942
271	463265.7451	4463160.135	548	466189.8547	4455098.459
272	463295.3117	4463166.821	549	466163.0969	4455030.404
273	463324.7948	4463180.916	550	466148.6079	4454972.194
274	463376.411	4463203.731	551	466152.0014	4454941.73
275	463443.9766	4463220.373	552	466160.2434	4454867.745
276	463494.6178	4463235.766	553	466167.3859	4454837.777
277	463523.349	4463245.941	554	466165.583	4454818.572